



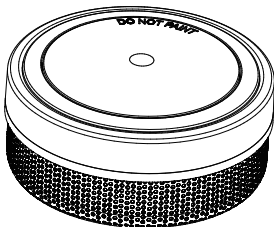
# Multi Purpose Photoelectric Smoke Alarm

---

## Manual

---

Model QM10  
Product code 138625



Photoelectric smoke alarms are designed to detect visible particles (associated with slow smouldering fires). Home fires develop in different ways and are often unpredictable. For maximum protection against fast flaming fires and slow smouldering fires, both ionisation and photoelectric alarms should be installed.

Quell® is a registered trademark of Kidde Australia Pty Ltd.  
Copyright © 2022 carrier. All rights reserved.  
Kidde Australia Pty Ltd is part of the Carrier Global Corporation (NYSE: CARR) group of companies.

## Contents

---

Introduction .....	1
Installation .....	2-8
Operation .....	9-10
Troubleshooting .....	11-12
Maintenance .....	12
Fire Safety .....	13-14
Good Safety Habits .....	15
Warranty & Contact Details .....	16-17

**QUELL** 

Manufactured in China for:  
Kidde Australia Pty Ltd  
Building F Unit 1B  
3-29 Birnie Ave  
Lidcombe NSW, 2141 Australia  
Telephone: 1800 654 435  
Website: [www.quell.com.au](http://www.quell.com.au)

## Introduction

---

### Model QM10

If you have any questions about the operation or installation of your alarm, please call 1800 654435.

Figures 1A to 2B will help you determine the correct location of safety products

**WARNING!** Smoke alarm must be attached to mounting plate to operate.

**IMPORTANT!** Read all instructions before installation and keep this manual near the alarm for future reference.

### Product Specifications:

- **POWER:** built-in DC3V(CR123A) Lithium battery (battery not replaceable)
- **OPERATING CURRENT:** <8uA(standby), <70mA(alarm)
- **ALARM VOLUME:** >85dB(A) at 3 meters.
- **ALARM SENSITIVITY:** 0.115-0.181dB/m
- **SILENCE TIME:** approx. 10 minutes
- **SMOKE ALARM DEVICE SOUND PATTERN:**  
ISO8201(BI 0.5s-pause 0.5s-BI 0.5s-pause 0.5s-BI 0.5s-pause 1.5s, with the red LED flash, repeats pattern).
- **COMPLY WITH STANDARD:** AS3786:2014



## Installation Instructions

---

By law at least one smoke alarm must be installed on each level of your home ([Figure 1B](#)).

### Recommended Locations

- In every room where someone sleeps with the door closed. The closed door may prevent an alarm located outside from waking the sleeper.
- In the immediate area of bedrooms and the exit path from all sleeping areas ([Figure 1A](#)).
- In stairways, as stairways act like chimneys for smoke and heat.
- In any room where large electrical appliances are operated (e.g., portable heaters or humidifiers).
- If a hallway or room is more than 9.1m long, place alarms at both ends.
- For maximum household protection see [Figure 1C](#).

**Refer to your local state and federal laws or contact your local fire brigade to determine the minimum installation requirements.**

### Things to Consider:

#### For Ceiling Mounting:

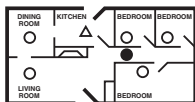
Smoke from a fire will rise to the ceiling and spread horizontally. Mounting the smoke alarm in the centre of the ceiling places it closest to all points in the room.

- When mounting an alarm on the ceiling, locate it at a minimum of 50cm from the side wall ([Figure 2A](#)).
- For sloped, peaked or cathedral ceilings the alarm should be placed between 500mm and 1000mm from the highest point of the ceiling ([Figure 2B](#)).
- Smoke alarms in rooms with ceiling slopes greater than 1m in 8m horizontally, should be located on the high side of the room ([Figure 2B](#)).

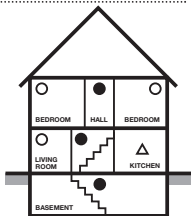
#### For Wall Mounting:

When mounting the alarm on the wall, use an interior wall with the top edge of the alarm at a minimum of 10cm and a maximum of 30.5cm below the ceiling ([Figure 2A](#))

## Installation



- Smoke Alarms for Minimum Protection
- Smoke Alarms for Additional Protection
- △ Ionisation Type Smoke Alarm with Alarm Silencer (Hush™) or Photoelectric Type

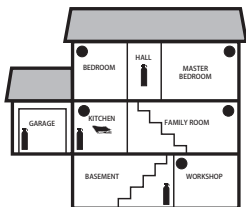


SINGLE FLOOR PLAN

FIGURE 1A

MULTIPLE FLOOR PLAN

FIGURE 1B



-  FIRE EXTINGUISHERS
-  SMOKE ALARMS
-  FIRE BLANKET

FIGURE 1C

TOTAL HOME PROTECTION

## Installation

Figure 2A

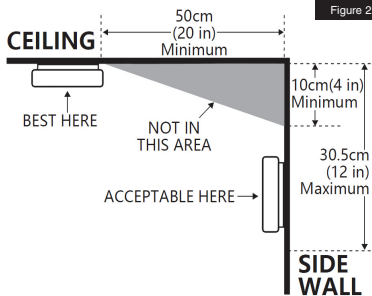
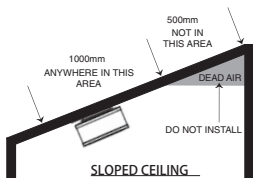


Figure 2B



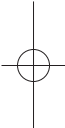


---

## Installation

---

### **Do Not Install Smoke Alarm Devices In The Following Places:**

- 1:Near appliances or areas where normal combustion regularly occurs (kitchens, near furnaces, hot water heaters).
  - 2:In areas with high humidity, like bathrooms or areas near dishwashers or washing machines. Install at least 3 meters away from these areas.
  - 3:Near air returns or heating and cooling supply vents. Install at least 0.9 meter away from these areas. The air could blow smoke away from the detector.
  - 4:In rooms where temperatures may fall below 5°C or rise above 40°C, or in humidity higher than 85%. These conditions will reduce battery life or cause an alarm fault.
  - 5:In extremely dusty, dirty, or insect – infested areas. These areas may affect smoke alarms device operation.
  - 6:Do not place in garage.
- 

### **Suitable for installation in leisure accommodation vehicles**

This smoke alarm is suitable for use in mobile homes and caravans. This smoke alarm is not intended for any non-residential, commercial or industrial application, nor for any other purpose than described.

N.B. - Smoke alarms are not to be used with detector guards unless the combination (alarm and guard) has been evaluated and found suitable for that purpose.



## Installation

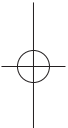
---

- Take off the bracket from the alarm body.
- Put the bracket on the installation position, mark installation hole of the bracket with pencil.
- Drill a 5mm hole through the pencil marks and insert the two plastic plug supplied.
- Attach the bracket to the plastic plugs and fix tightly the screws into the plastic plugs.(Refer to Figure 3).
- Fit the alarm on the bracket and turn the alarm body clockwise, until matching well on the bracket.
- Press the test button on the unit. The alarm sounds 3 beeps – 1.5 seconds pause, repeats until button is released, if no sound, it indicates a defective alarm, you can refer to " Trouble shooting" for solution or return to your retailer during warranty.
- If you have any questions on installation, contact customer service on 1800654435.



### WARNING:

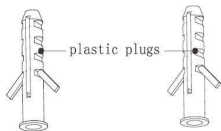
To prevent injury, this unit must be securely attached to the ceiling in accordance with the installation instructions.



## Installation

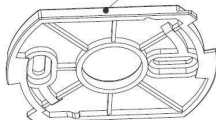
---

holes of ceiling or wall

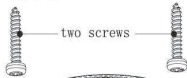


plastic plugs

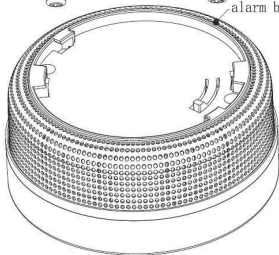
bracket



two screws



alarm body







---

## Operation

---

### Testing

The alarm must be fully mounted on bracket. Test the unit to ensure proper operation by pressing the test button, this will sound the alarm if the electronic circuitry, bracket is mounted, horn, and battery are working. If no alarm sounds, there is a defective battery or other failure, you can refer to “Trouble shooting” section for solution.

**DO NOT** use an open flame to test your alarm, you could damage the alarm or ignite combustible materials and start a fire.

**CAUTION:** Due to the loudness(85 decibels) of the alarm, Always stand an arms-length away from the unit when testing.

Test the alarm weekly to ensure proper operation. Erratic or low sound coming from your alarm may indicate a defective alarm, you can refer to “Trouble shooting” section for solution.

**NOTE: WEEKLY TESTING IS REQUIRED.**

### LED indicators

Red LED-Flashing once every 40 seconds: indicates that the smoke alarm device is operating properly.

Red LED-Flashing: when the test button is pressed, or when the smoke alarm device sense particles of combustion and goes into alarm (constant pulsating sound), the red LED will flash once per second. The flashing LED and pulsating alarm will continue until the air is cleared or release test button. Red LED-Alarm silencer (Hush mode) indication: The redLED will flash once every 8 seconds, indicating the smoke alarm device is in the alarm silence (Hush) mode.

Low battery indication-An intermittent “chirp” with red LED flashes once every 40 seconds: indicates that the smoke alarm device is low battery, you may press the test button for pause alarm for 10 hours, but it will reset automatically after10 hours.

Fault indication-The alarm chirp occurs every 40 seconds.



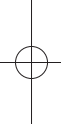
---

## Operation

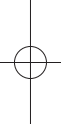
---

**NOTE:** When the units chirp once every 40 seconds, you can press the test button temporarily for pausing this warning tone for 10 hours, it can still normally detect smoke during this period, it only removes nuisance warning tone. You can refer to “Trouble shooting” for solution, if there are still failures, **you MUST replace it with a new alarm at once** or contact your retailer during warranty.

### **Alarm silence(silence mode)**



The silent feature has the capability of temporarily desensitising the alarm circuit for approximately 10 minutes. The red LED will flash once every 8 seconds, it indicates the smoke alarm device is running into the silence mode. Smoke alarm devices are designed to minimize nuisance alarms. Combustion particles from cooking may set off the alarm if the alarm is located close to the cooking area. Large quantities of combustible particles are generated from spills or when grilling/ frying. Using the fan on a range hood that vents to outside(non-recirculating type) will also help remove these combustible particles from the kitchen.



The alarm silence (test button) is extremely useful in a kitchen area or other areas prone to nuisance alarms. The silence feature is to be used only when a known alarm condition, such as smoke from cooking activates the alarm. The smoke alarm device is desensitised by pushing the alarm silence(silence mode) on the smoke alarm device cover, the alarm will silence to indicate that the alarm is in a temporarily desensitised condition.

The smoke alarm device will automatically reset after approximately 10 minutes, if after this period, particles of combustion are still present, the alarm will sound again. The alarm silencer (silence mode) can be used repeatedly.

**CAUTION:** Before using the alarm silence, identify the source of the smoke and be certain a safe condition exists.

**DANGER:** If the alarm sounds, and it is not being tested, it means the unit is sensing smoke, **THE SOUND OF THE ALARM REQUIRES YOUR IMMEDIATE ATTENTION AND ACTION.**

## Troubleshooting:

Problem	Action
Smoke alarm device does not sound when tested.	<ol style="list-style-type: none"><li>1. Fit the alarm on the bracket and turn the alarm body clockwise, until locking in place on the bracket.</li><li>2. Clean smoke alarm device. Please refer to the "maintenance and cleaning" section.</li><li>3. If there are still failures during warranty, you can return to your retailer.</li><li>4. If the unit is out of warranty, please replace with another new alarm.</li></ol>
The alarm "chirp" with red LED flashes on every 40 seconds.	The battery is under low battery status, please replace the smoke alarm device.
Smoke alarm device chirp occurs every 40 seconds (alarm goes into fault mode) .	Clean smoke alarm device. Please refer to the "maintenance and cleaning" section. Purchase and install another smoke alarm device if the problem still exist.
Smoke alarm device sounds unwanted alarms intermittently or when residents are cooking, taking showers, etc.	<ol style="list-style-type: none"><li>1. Press test button to pause alarm.</li><li>2. Clean smoke alarm device. Please refer to the "maintenance and cleaning" section.</li><li>3. Move smoke alarm device to new location and press test button.</li></ol>

The alarm sounds different from it is used to. It starts and stops.

1. Clean smoke alarm device. Please refer to the "maintenance and cleaning" section.
2. If there are still failures during warranty, you can return to your retailer.
3. If the unit is out of warranty, replace with another new alarm.

## Maintenance

In addition to weekly testing, the alarm requires periodic cleaning to remove dust, dirt, and debris.

Clean the alarm at least once a month to remove dust, dirt, or debris.

Use a vacuum cleaner with the soft brush, vacuum all sides and covers of smoke alarm device.

This alarm has a low battery monitor which will cause the alarm to "chirp" approx every 40 seconds and the red LED flash once at the same time for a minimum of thirty days when the battery gets low.

If there is a defective battery or other failures, you can refer to "Trouble shooting" for solution, if there are still failures during warranty, you can return to your retailer.

**WARNING:**The battery is sealed in cover and not replaceable.

Please replace another new alarm if the low battery chirp occurs.

**IMPORTANT:**Do not attempt to remove the cover to clean inside. This will affect warranty.



---

## Fire Safety

---

**WARNING:** Please read carefully and thoroughly.

- Australian Standard AS 1670.6 states the purpose of installing smoke alarms is to provide early warning of a potentially life threatening condition and provide the maximum possible exit time.
- Smoke alarms have sensing limitations. Ionisation sensing alarms may detect invisible fire particles (associated with fast flaming fires) sooner than photoelectric alarms. Photoelectric sensing alarms may detect visible fire particles (associated with slow smoldering fires) sooner than ionisation alarms. Home fires develop in different ways and are often unpredictable. For maximum protection, both ionisation and photoelectric alarms should be installed.
- A battery powered alarm must have a battery of the specified type, in good condition and installed properly.
- AC powered alarms (without battery backup) will not operate if the AC power has been cut off, such as by an electrical fire or an open fuse.
- Smoke alarms must be tested regularly to make sure the batteries and the alarm circuits are in good operating condition.
- Smoke alarms cannot provide an alarm if smoke does not reach the alarm. Therefore, smoke alarms may not sense fires starting in chimneys, walls, on roofs, on the other side of a closed door or on a different floor.
- If the alarm is located outside the bedroom or on a different floor, it may not wake up a sound sleeper.
- The use of alcohol or drugs may also impair one's ability to hear the smoke alarm. For maximum protection, a smoke alarm should be installed in each sleeping area on every level of a home.
- Although smoke alarms can help save lives by providing an early warning of a fire, they are not a substitute for an insurance policy. Home owners, landlords and tenants should have adequate insurance to protect their lives and property.

**IMPORTANT:** This alarm is not intended to alert hearing impaired individuals.



---

## Fire Safety

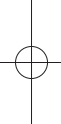
---

### Additional Information

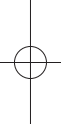
Smoke Detection - Where required by applicable laws, codes, or standards for the specified occupancy, approved single and multiple-station smoke alarms shall be installed as follows:

- In all sleeping rooms with the exception: Smoke alarms shall not be required in sleeping rooms in existing one and two-family dwelling units.
- Outside of each separate sleeping area, in immediate vicinity of the sleeping rooms.
- On each level of the dwelling unit, including basements exception: In existing one and two-family dwelling units, approved smoke alarms powered by batteries are permitted.

### Smoke Detection



Are more smoke alarms desirable? The required number of smoke alarms might not provide reliable early warning protection for those areas separated by a door from the areas protected by the required smoke alarms. For this reason, it is recommended that the householder consider the use of additional smoke alarms for those areas for increased protection.



The additional areas include the basement, bedrooms, dining room, furnace room, utility room, and hallways not protected by the required smoke alarms.

## Good Safety Habits



### Develop and practice a plan of escape:

- Install and maintain Fire extinguishers on every level of the home and in the kitchen, basement and garage. Know how to use a fire extinguisher prior to an emergency.
- Current studies have shown smoke alarms may not awaken all sleeping individuals, and that it is the responsibility of individuals in the household that are capable of assisting others to provide assistance to those who may not be awakened by the alarm sound, or to those who may be incapable of safely evacuating the area unassisted.
- Make a floor plan indicating all doors and windows and at least two escape routes from each room. Second storey windows may need a rope or chain ladder.
- Have a family meeting and discuss your escape plan, showing everyone what to do in case of a fire.
- Determine a place outside your home where you can meet if a fire occurs.
- Familiarise everyone with the sound of the alarm and train them to leave your home when they hear it.
- Practice a fire drill at least every six months, including fire drills at night. Ensure that small children hear the alarm and wake when it sounds. They must wake up in order to execute the escape plan. Practice allows all occupants to test your plan before an emergency. You may not be able to reach your children. It is important they know what to do.

### What to do when the Alarm Sounds

- Alert small children in the home.
- Leave immediately by your escape plan. Every second counts, so don't waste time getting dressed or picking up valuables.
- In leaving, don't open any inside door without first feeling its surface. If hot, or you see smoke seeping through cracks, don't open that door! Instead use your alternative exit.
- If the inside of the door is cool, place your shoulder against it, open it slightly and be ready to slam it shut if heat and smoke rush in.
- Stay close to the floor if the air is smoky. Breathe shallowly through a cloth, wet if possible.
- Once outside, go to your selected meeting place and make sure everyone is there.
- Call the fire brigade on 000 (AUS) or 111 (NZ) from your neighbour's home or a phone box - not from yours!
- Don't return to your home until the fire officials say that it is all right to do so.
- There are situations where a smoke alarm may not be effective to protect against fire. For instance:
  - a) smoking in bed
  - b) leaving children unsupervised.
  - c) cleaning with flammable liquids, such as gasoline
  - d) fires where the victim is intimate with a flaming initiated fire; for example, when a person's clothes catch fire while cooking.
  - e) incendiary fires where the fire grows so rapidly that an occupant's egress is blocked even with properly located detectors.

Installation Date: \_\_\_\_\_

Alarm Model(s): \_\_\_\_\_

Installer/Landlord: \_\_\_\_\_

Tel: \_\_\_\_\_

Kiddle Australia Pty Ltd  
Building F Unit 1B  
3 -29 Birnie Ave  
Lidcombe NSW, 2141 Australia  
www.quell.com.au

Detach and display next to your Consumer Unit/Fuse Box.

## WARRANTY & CONTACT DETAILS

### FIVE YEAR LIMITED WARRANTY

#### Warranty

Quell warrants to the original consumer purchaser that each new smoke alarm will be free from defects in materials and workmanship under normal use for a period of 5 years from the date of purchase. To the extent permitted by law, Quell agrees to repair or replace (at our discretion) any defective product on presentation of the proof of purchase.

#### Australia warranty claims:

Where the goods are offered for sale in Australia, the benefits to the consumer given by this warranty are in addition to other rights and remedies of the consumer under the Australian Consumer Law and other applicable laws relating to the goods. Our goods come with guarantees that cannot be excluded under the Australian Consumer Law. You are entitled to a replacement or refund for a major failure and compensation for any other reasonably foreseeable loss or damage. You are also entitled to have the goods repaired or replaced if the goods fail to be of acceptable quality and the failure does not amount to a major failure.

#### Exclusions

Subject to non-excludable laws, this warranty does not cover:

- normal wear and tear to the product or parts
- batteries or other consumables included with this product (excluding sealed non replaceable battery models)
- damage to the product caused by accidents, misuse, abuse, lack of reasonable care, tampering or repair by a person not authorised by Quell
- any product that has not been installed, operated or maintained in accordance with the manual or operating instructions provided with the product
- any damage caused by improper power input or improper cable connection
- any indirect or special loss or damage of any kind

#### To make a claim

If a defect in the product appears within the time frame stated, you are entitled to submit a warranty claim by returning your product to the address shown below. Please contact Quell on the telephone numbers provided below, Monday to Friday during 9.00AM - 5.00PM. When returning the product, please ensure it is properly packaged so that no damage occurs during transit. Any postage and packaging expenses required to return the product to Quell will be at your cost.



## WARRANTY & CONTACT DETAILS

Please provide the original or a copy of the proof of purchase. Also, please make sure you have included an explanation of the problem.

If Quell elects to repair the product, please note that goods presented for repair may be replaced by refurbished goods of the same type rather than being repaired. Refurbished parts may be used to repair the goods.

This warranty is provided by:  
Kidde Australia Pty Ltd  
Building F Unit 1B  
3-29 Birnie Ave  
Lidcombe NSW, 2141 Australia  
Telephone: 1800 654 435  
Website: [www.quell.com.au](http://www.quell.com.au)

Registered office:  
10 Ferntree place  
Notting Hill, Vic, 3168  
Australia

