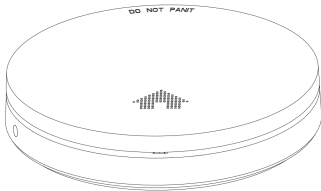




Slimline Photoelectric Smoke Alarm

Manual

Model QSP10
Product Code 138626



Photoelectric smoke alarms are designed to detect visible particles (associated with slow smouldering fires). Home fires develop in different ways and are often unpredictable. For maximum protection against fast flaming fires and slow smouldering fires, both ionisation and photoelectric alarms should be installed.

Quell[®] is a registered trademark of Kidde Australia Pty Ltd.
Copyright © 2022 carrier. All rights reserved.

Kidde Australia Pty Ltd is part of the Carrier Global Corporation (NYSE: CARR) group of companies.

Contents

Introduction	1
Installation	2 – 8
Operation	9 – 13
Troubleshooting	14
Maintenance	15
Fire Safety	16-17
Good Safety Habits	18
Warranty & Contact Details	19-20

QUELL 

Manufactured in China for:
Kidde Australia Pty Ltd
Building F Unit 1B
3-29 Birnie Ave, Lidcombe NSW,
2141 Australia
Telephone : 1800 654 435
Website: www.quell.com.au

Introduction

Model QSP10


If you have any questions about the operation or installation of your alarm, please call 1800 654435.

Figures 1A to 2B will help you determine the correct location of safety products.

IMPORTANT! Read all instructions before installation and keep this manual near the alarm for future reference.

Product Specifications:

- Power Supply: DC 3V
- Battery Spec.: CR123A
- Battery Lifetime :10 years
- Alarm Sensitivity: 0.100-0.160 dB/m
- Alarm Volume: $\geq 85\text{dB(A)}$ @ 3m
- Operating Temperature: 0°C to 40°C
- Ambient Humidity: $\leq 93\%$
- Date of Replacement :See product label
- Individual Alarm Indicator :Yes
- Alarm Silence Facility :Yes | Hush time: 10 minutes
- Low Battery Warning :Yes
- Accommodation Vehicles :Yes

- 
- Mounting location :Ceiling or wall
 - Sound Pattern: ISO8201(BI 0.5s-pause 0.5s-BI 0.5s-pause 0.5s-BI 0.5s-pause 1.5s, with the RED LED flashing, repeat this alarm pattern)
 - Comply with: AS3786:2014



Warnings:

- To prevent injury, this apparatus must be securely attached to the ceiling/wall in accordance with the installation instructions.
- Batteries should not be exposed to excessive heat such as sunshine, fire or the like.
- Do not paint or cover the smoke alarm.

Installation Instructions

By law at least one smoke alarm must be installed on each level of your home ([Figure 1B](#)).

Recommended Locations

- 
- In every room where someone sleeps with the door closed. The closed door may prevent an alarm located outside from waking the sleeper.
 - In the immediate area of bedrooms and the exit path from all sleeping areas ([Figure 1A](#)).
 - In stairways, as stairways act like chimneys for smoke and heat.
 - In any room where large electrical appliances are operated (e.g., portable heaters or humidifiers).
 - If a hallway or room is more than 9.1m long put alarms at both ends.
 - For maximum household protection see Figure 1C.
- 

Refer to your local state and federal laws or contact your local fire brigade to determine the minimum installation requirements.

Things to Consider:

For Ceiling Mounting:

Smoke from a fire will rise to the ceiling and spread horizontally. Mounting the smoke alarm in the centre of the ceiling places it closest to all points in the room.

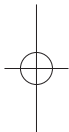
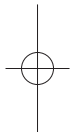
- When mounting an alarm on the ceiling, locate it at a minimum of 50cm from the side wall ([Figure 2A](#)).



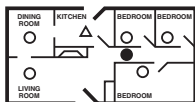
- For sloped, peaked or cathedral ceilings the alarm should be placed between 500mm and 1000mm from the highest point of the ceiling (Figure 2B).
- Smoke alarms in rooms with ceiling slopes greater than 1m in 8m horizontally, should be located on the high side of the room (Figure 2B).

For Wall Mounting:

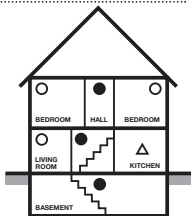
When mounting the alarm on the wall, use an interior wall with the top edge of the alarm at a minimum of 10cm and maximum of 30cm below the ceiling (Figure 2A).



Installation



- Smoke Alarms for Minimum Protection
- Smoke Alarms for Additional Protection
- △ Ionisation Type Smoke Alarm with Alarm Silencer (Hush™) or Photoelectric Type

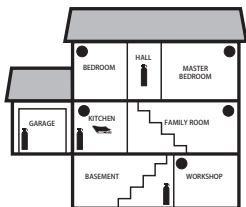


SINGLE FLOOR PLAN

FIGURE 1A

MULTIPLE FLOOR PLAN

FIGURE 1B



-  FIRE EXTINGUISHERS
-  SMOKE ALARMS
-  FIRE BLANKET

FIGURE 1C

TOTAL HOME PROTECTION

Installation

Figure 2A

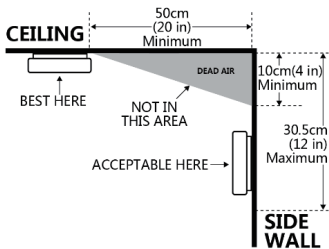
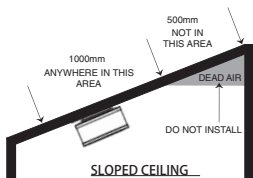


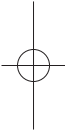
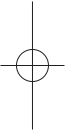
Figure 2B





Installation

Do Not Install Smoke Alarm Devices In The Following Places:

- 
1. In the garage. Products of combustion are present when you start your automobile.
 2. Less than 20" (50cm) from the peak of an "A" frame type ceiling. (See figure 2A)
 3. In an area where the temperature may fall below 0°C or rise above 40°C, such as garages and unfinished attics.
 4. In dusty areas. Dust particles may cause nuisance alarm or failure to alarm.
 5. In very humid areas (greater than 93%R.H.). Moisture or steam can cause nuisance alarms.
 6. In insect-infested areas.
 7. Smoke alarms should not be installed within 3 foot (0.9m) of the following: the door to a kitchen, the door to a bathroom containing a tub or shower, forced air supply ducts used for heating or cooling, ceiling or whole house ventilating fans, or other high air flow areas.
 8. Kitchens. Normal cooking may cause nuisance alarms. If a kitchen alarm is desired, it should have an alarm silence feature or be a photoelectric type.
 9. Near fluorescent lights. Electronic "noise" may cause nuisance alarms.
- 

N.B. - Smoke alarms are not to be used with detector guards unless the combination (alarm and guard) has been evaluated and found suitable for that purpose.



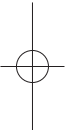
Installation

- Place the mounting plate on the desired installation location and mark where the holes should be drilled.
- Drill two holes with a diameter of 5 millimetres.
- Push the plastic plugs into the holes.
- Remove the fixing plug from the mounting plate (if necessary, use a screw driver for this).
- Insert the screws into the mounting plate, and tighten them firmly into the plugs.
- Place the smoke alarm on the mounting bracket and secure it by turning it clockwise.
- Test the correct operation of your smoke alarm by pressing the test button. If no sound is generated, the smoke alarm is not functioning properly and should not be used!

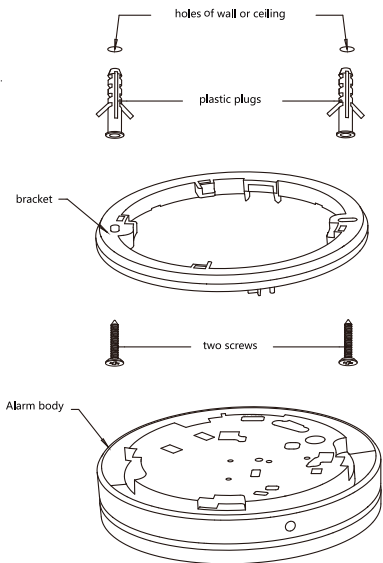


WARNING:

To prevent injury, this unit must be securely attached to the ceiling in accordance with the installation instructions.



Installation



Operation

Product function description:		
Function	Indication	Description
Standby status	The red LED flashes every 40 seconds.	The unit is working.
Low battery warning	The unit chirps with red LED flashing every 40 seconds.	The battery is under low battery status, please replace the smoke alarm device.
Fault warning	The unit chirps between the red LED two times flashing.	The unit is faulty, get help from the section: "Trouble Shooting".
Self-test fault warning	The red LED flashes twice every 40 seconds.	The buzzer fault or buzzer detection circuit fault.
Test function	The red LED flashes once every second with alarm sounding until the TEST button is released.	<ul style="list-style-type: none">• Test by pressing the TEST button on the smoke alarm at least 3 seconds.• The alarm will sound if all electronic circuitry, horn and battery are working properly. <p>Note: Volume reduced for first 3 cycles while pressing test button.</p> <ul style="list-style-type: none">• If no alarm sounds, refer to "Trouble Shooting"

Operation

Product function description:		
Function	Indication	Description
Weekly self-test	The unit chirps weekly.	Self-test instead of testing weekly by manual. Recommend testing the alarm semiannually by pressing the TEST button.
Silence function	The Red LED flashes every 8 seconds.	<ul style="list-style-type: none">• This smoke alarm has a built-in silence feature.• If cooking or other non-hazardous sources cause the alarm to sound, it can be temporarily silenced by pressing the test button.• The alarm enters silence mode for 10 minutes.• After the 10 minute dormant period, the smoke alarm will resume normal operation.
Fire alarm	The Red LED flashes every second, with alarm sounds.	Generate alarm sounds when fire happening.

Operation

Product function description:		
Function	Indication	Description
No disturbing	The Red LED flashes every 40 seconds.	The unit will stop nuisance warning about 10 hours under low battery or fault mode when the HUSH button is pressed.
CAUTION: <ul style="list-style-type: none">• Before using the silence function, identify the source of the smoke and make sure a safe condition existing. After 10 minute silence, the unit will resume to normal operation.• DO NOT use an open flame to test your alarm, you could damage the alarm or ignite combustible materials and result in a fire.• If the alarm sound, and it is not being tested, it means the unit detected smoke. THE SOUND OF THE ALARM REQUIRES YOUR IMMEDIATE ATTENTION AND ACTION.		

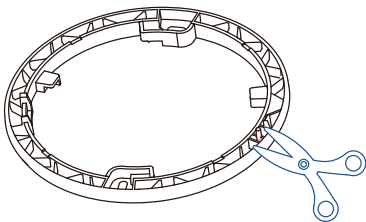
Night mode

This smoke alarm has an automatic night mode. In dark rooms, the led the led signal will be dimmed to prevent disturbance of the night's sleep.

Alarm Tamper-Resist Feature

- A tamper resist feature has been provided. To activate this feature you must break out the tamper-resist blocks on the mounting plate.
- Using this feature will deter children and others from removing the alarm from the mounting plate.

Operation



Operation

Disassembling Instructions 1

To disassemble the smoke alarm, take a screw driver and push it into the mounting hole. Then, turn the smoke alarm counterclockwise to remove it from the mounting bracket.



Disassembling Instructions 2

No tools required, Turn the alarm body counterclockwise and take out the alarm body from the bracket.

Activation

To activate the alarm, install the alarm on the mounting bracket

- The alarm will make a “beep” sound, indicating that the product is activated successfully.
- Firmly press the test button for at least 3 seconds. The alarm will sound 3 short beeps-1.5 seconds pause, then repeat it until release the button. The alarm may sound for up to a few seconds after releasing the test button, indicating that the product can be used normally.

Trouble shooting:

Problem	Cause and Remedy
The red LED does not flash very 40s	<ul style="list-style-type: none">• Make sure the product is activated
Smoke alarm does not sound when tested	<ul style="list-style-type: none">• Make sure the product is activated• Clean the smoke alarm.
Low battery warning	<ul style="list-style-type: none">• The battery is under low battery status, please replace the smoke alarm device.
Fault warning	<ul style="list-style-type: none">• Clean the smoke alarm.
Self-test fault warning	<ul style="list-style-type: none">• Press the TEST button at least 15s, then release.
False alarm	<ul style="list-style-type: none">• Press the TEST button to silence it• Clean smoke alarm device.• Move the smoke alarm device to new location.
The alarm sounds different from it is used to	<ul style="list-style-type: none">• Ensure that the battery is not low voltage.• Clean smoke alarm.
<ul style="list-style-type: none">• If the unit is out of warranty, please replace with another new alarm.	



Maintenance

In addition to weekly testing, the alarm requires periodic cleaning to remove dust, dirt, and debris.

Clean the alarm at least once a month to remove dust, dirt, or debris.

Use a vacuum cleaner with the soft brush, vacuum all sides and covers of smoke alarm device.

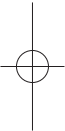
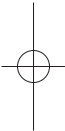
This alarm has a low battery monitor which will cause the alarm to “chirp” approx every 40 seconds and the red LED flash once at the same time for a minimum of thirty days when the battery gets low.

If there is a defective battery or other failures, you can refer to “Trouble shooting” for solution, if there are still failures during warranty, you can return to your retailer.

WARNING:The battery is sealed in cover and not replaceable.

Please replace another new alarm if the low battery chirp occurs.

IMPORTANT:Do not attempt to remove the cover to clean inside. This will affect warranty.





Fire Safety

WARNING: Please read carefully and thoroughly.

- Australian Standard AS 1670.6 states the purpose of installing smoke alarms is to provide early warning of a potentially life threatening condition and provide the maximum possible exit time.
- Smoke alarms have sensing limitations. Ionisation sensing alarms may detect invisible fire particles (associated with fast flaming fires) sooner than photoelectric alarms. Photoelectric sensing alarms may detect visible fire particles (associated with slow smoldering fires) sooner than ionisation alarms. Home fires develop in different ways and are often unpredictable. For maximum protection, both ionisation and photoelectric alarms should be installed.
- A battery powered alarm must have a battery of the specified type, in good condition and installed properly.
- AC powered alarms (without battery backup) will not operate if the AC power has been cut off, such as by an electrical fire or an open fuse.
- Smoke alarms must be tested regularly to make sure the batteries and the alarm circuits are in good operating condition.
- Smoke alarms cannot provide an alarm if smoke does not reach the alarm. Therefore, smoke alarms may not sense fires starting in chimneys, walls, on roofs, on the other side of a closed door or on a different floor.
- If the alarm is located outside the bedroom or on a different floor, it may not wake up a sound sleeper.
- The use of alcohol or drugs may also impair one's ability to hear the smoke alarm. For maximum protection, a smoke alarm should be installed in each sleeping area on every level of a home.
- Although smoke alarms can help save lives by providing an early warning of a fire, they are not a substitute for an insurance policy. Home owners, landlords and tenants should have adequate insurance to protect their lives and property.

IMPORTANT: This alarm is not intended to alert hearing impaired individuals.



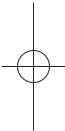
Fire Safety

Additional Information

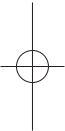
Smoke Detection - Where required by applicable laws, codes, or standards for the specified occupancy, approved single and multiple-station smoke alarms shall be installed as follows:

- In all sleeping rooms with the exception: Smoke alarms shall not be required in sleeping rooms in existing one and two-family dwelling units.
- Outside of each separate sleeping area, in immediate vicinity of the sleeping rooms.
- On each level of the dwelling unit, including basements exception: In existing one and two-family dwelling units, approved smoke alarms powered by batteries are permitted.

Smoke Detection



Are more smoke alarms desirable? The required number of smoke alarms might not provide reliable early warning protection for those areas separated by a door from the areas protected by the required smoke alarms. For this reason, it is recommended that the householder consider the use of additional smoke alarms for those areas for increased protection.



The additional areas include the basement, bedrooms, dining room, furnace room, utility room, and hallways not protected by the required smoke alarms.

Good Safety Habits



Develop and practice a plan of escape:

- Install and maintain Fire extinguishers on every level of the home and in the kitchen, basement and garage. Know how to use a fire extinguisher prior to an emergency.
- Current studies have shown smoke alarms may not awaken all sleeping individuals, and that it is the responsibility of individuals in the household that are capable of assisting others to provide assistance to those who may not be awakened by the alarm sound, or to those who may be incapable of safely evacuating the area unassisted.
- Make a floor plan indicating all doors and windows and at least two escape routes from each room. Second storey windows may need a rope or chain ladder.
- Have a family meeting and discuss your escape plan, showing everyone what to do in case of a fire.
- Determine a place outside your home where you can meet if a fire occurs.
- Familiarise everyone with the sound of the alarm and train them to leave your home when they hear it.
- Practice a fire drill at least every six months, including fire drills at night. Ensure that small children hear the alarm and wake when it sounds. They must wake up in order to execute the escape plan. Practice allows all occupants to test your plan before an emergency. You may not be able to reach your children. It is important they know what to do.

What to do when the Alarm Sounds

- Alert small children in the home.
- Leave immediately by your escape plan. Every second counts, so don't waste time getting dressed or picking up valuables.
- In leaving, don't open any inside door without first feeling its surface. If hot, or you see smoke seeping through cracks, don't open that door! Instead use your alternative exit.
- If the inside of the door is cool, place your shoulder against it, open it slightly and be ready to slam it shut if heat and smoke rush in.
- Stay close to the floor if the air is smoky. Breathe shallowly through a cloth, wet if possible.
- Once outside, go to your selected meeting place and make sure everyone is there.
- Call the fire brigade on 000 (AUS) or 111 (NZ) from your neighbour's home or a phone box - not from yours!
- Don't return to your home until the fire officials say that it is all right to do so.
- There are situations where a smoke alarm may not be effective to protect against fire. For instance:
 - a) smoking in bed
 - b) leaving children unsupervised.
 - c) cleaning with flammable liquids, such as gasoline
 - d) fires where the victim is intimate with a flaming initiated fire; for example, when a person's clothes catch fire while cooking.
 - e) incendiary fires where the fire grows so rapidly that an occupant's egress is blocked even with properly located detectors.

Installation Date: _____

Alarm Model(s): _____

Installer/Landlord: _____

Tel: _____

Kidde Australia Pty Ltd
Building F Unit 1B, 3-29 Birnie Ave, Lidcombe NSW, 2141 Australia
www.quell.com.au

Detach and display next to your Consumer Unit/Fuse Box.

WARRANTY & CONTACT DETAILS

FIVE YEAR LIMITED WARRANTY

Warranty

Quell warrants to the original consumer purchaser that each new smoke alarm will be free from defects in materials and workmanship under normal use for a period of 5 years from the date of purchase. To the extent permitted by law, Quell agrees to repair or replace (at our discretion) any defective product on presentation of the proof of purchase.

Australia warranty claims:

Where the goods are offered for sale in Australia, the benefits to the consumer given by this warranty are in addition to other rights and remedies of the consumer under the Australian Consumer Law and other applicable laws relating to the goods. Our goods come with guarantees that cannot be excluded under the Australian Consumer Law. You are entitled to a replacement or refund for a major failure and compensation for any other reasonably foreseeable loss or damage. You are also entitled to have the goods repaired or replaced if the goods fail to be of acceptable quality and the failure does not amount to a major failure.

Exclusions

Subject to non-excludable laws, this warranty does not cover:

- normal wear and tear to the product or parts
- batteries or other consumables included with this product (excluding sealed non replaceable battery models)
- damage to the product caused by accidents, misuse, abuse, lack of reasonable care, tampering or repair by a person not authorised by Quell
- any product that has not been installed, operated or maintained in accordance with the manual or operating instructions provided with the product
- any damage caused by improper power input or improper cable connection
- any indirect or special loss or damage of any kind

To make a claim

If a defect in the product appears within the time frame stated, you are entitled to submit a warranty claim by returning your product to the address shown below. Please contact Quell on the telephone numbers provided below, Monday to Friday during 9.00AM - 5.00PM. When returning the product, please ensure it is properly packaged so that no damage occurs during transit. Any postage and packaging expenses required to return the product to Quell will be at your cost.

WARRANTY & CONTACT DETAILS

Please provide the original or a copy of the proof of purchase. Also, please make sure you have included an explanation of the problem.

If Quell elects to repair the product, please note that goods presented for repair may be replaced by refurbished goods of the same type rather than being repaired. Refurbished parts may be used to repair the goods.

This warranty is provided by:
Kidde Australia Pty Ltd
Building F Unit 1B, 3-29 Birnie Ave
Lidcombe NSW, 2141 Australia
Telephone: 1800 654 435 Website:
www.quell.com.au

Registered office:
10 Ferntree Place
Notting Hill, Vic, 3168
Australia

