

# QUELL ESCAPE LADDER

## MODEL QL-2S 4M



## WARNING

### FAILURE TO READ AND FOLLOW THESE INSTRUCTIONS COULD RESULT IN SERIOUS INJURY OR DEATH.

You must be familiar with the operation of this product prior to use. Portable escape ladders are intended for use as a means of escape from residential buildings and to supplement the primary means of egress required by codes and other local regulations.

It is strongly recommended that you practice mounting the ladder for deployment as described in steps 1, 2, and 3 under instructions for use of this ladder. During practices, DO NOT PULL THE RELEASE STRAP TO DEPLOY THE LADDER. Your ladder has been carefully assembled to ensure proper deployment when needed. Do not deploy into flames.

In normal use, it is possible that this ladder may scratch, dent or blemish the exterior surface of a home. Not recommended for use with storm windows or other windows that do not open fully to the recommended minimum space. Further, care should be taken to ensure that the ladder is not used from any window that is above another window. Failure to take this precaution may lead to damaged window glass, screens or wood trim. In no event will Quell Safety, our dealers or distributors be liable to the purchaser or any other person for indirect, consequential, incidental or special damages that may occur during the use of this product. We recommend replacing the ladder every 15 years to ensure optimum strength and performance.

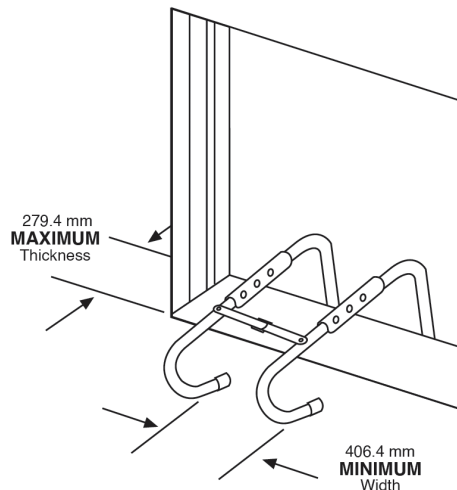
This ladder is intended to supplement (not replace) the more important fire protection principles of fire drills, emergency exit plans, smoke alarms, fire extinguishers, etc. Do not store in direct sunlight or at elevated temperatures.

## CONDITIONS FOR USE OF THIS LADDER

**Model QL-2S 4M:** The length of the QL-2S 4M ladder is approximately 3.9 metres (2 stories). When extended from the window, the bottom step of the ladder must be close enough to the ground to allow for a safe escape. Do not use this ladder from heights greater than 4.2 metres as injury could result.

The window to which the ladder is attached must be able to support the load of persons using the ladder for escape. The escape window must not be obstructed or covered with grilles or bars. The window must open fully for escape. Look for outside obstacles such as electrical wire, telephone wires, or fences.

The minimum width of escape window for use of the ladder is 406.4 mm. The maximum thickness of the escape window opening is 279.4 mm. Please refer to the diagram below for the required window dimensions.



### Required Window Dimensions

This escape ladder is to be used only as a last emergency escape device. Instruct family members to use the main escape routes if possible before using the ladder.

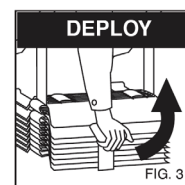
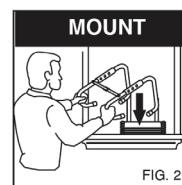
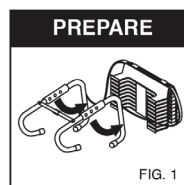
Do not exceed 454 kg load on this ladder.

This ladder is not a toy and should not be used by children unless supervised by an adult.

## INSTRUCTIONS FOR USE OF THIS LADDER

### STEP

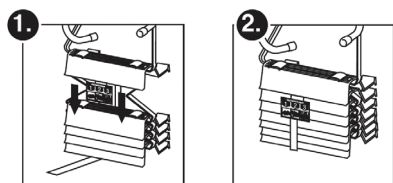
1. Close the doors to the room before opening the escape window to avoid intensifying a fire.
2. Open attachment hooks and extend centre support. (see Fig. 1)
3. Place hooks over window sill with ladder hanging on the outside of the structure. Attach the white end of the hooks to the inside wall. The red side of the hooks must be outside the window. (see Fig. 2)
4. Pull release strap to deploy ladder. (see Fig. 3) (To be done only in an actual emergency).
5. Carefully exit window onto ladder, holding attachment hooks to provide stability.
6. When descending the ladder, keep your body close to the ladder to maximise stability. Carry children on the ladder only when it is absolutely necessary. Avoid carrying pets or other objects on the ladder.
7. In family escape, the parent should exit first to stabilise the ladder during the descent of children or elderly adults.
8. Be careful to avoid breaking glass in adjacent windows when descending the ladder.





## STORAGE

Store the ladder close to the window where it will be used, such as in a closet or under the bed for easy access.



## PLANNING FOR EMERGENCY ESCAPE

Prepare an escape plan and practice the plan. The plan should include as a minimum two means of escape from each room (door and window), a meeting place to gather outside the residence, and call emergency services after the exit.

## WARRANTY

### Warranty

Quell warrants to the original consumer purchaser that each new Emergency Escape Ladder will be free from defects in materials and workmanship under normal use for a period of 5 years from the date of purchase. To the extent permitted by law, Quell agrees to repair or replace (at our discretion) any defective product on presentation of the proof of purchase.

### Australia warranty claims

Where the goods are offered for sale in Australia, the benefits to the consumer given by this warranty are in addition to other rights and remedies of the consumer under the Australian Consumer Law and other applicable laws relating to the goods. Our goods come with guarantees that cannot be excluded under the Australian Consumer Law. You are entitled to a replacement or refund for a major failure and compensation for any other reasonably foreseeable loss or damage. You are also entitled to have the goods repaired or replaced if the goods fail to be of acceptable quality and the failure does not amount to a major failure.

### New Zealand warranty claims

Where the goods are offered for sale in New Zealand, the benefits to the consumer given by this warranty are in addition to other rights and remedies of the consumer under relevant New Zealand consumer protection laws and other applicable laws relating to the goods.

Our goods come with guarantees that cannot be excluded under relevant New Zealand consumer protection laws. You are entitled to a replacement or refund for a major failure and compensation for any other reasonably foreseeable loss or damage. You are also entitled to have the goods repaired or replaced if the goods fail to be of acceptable quality and the failure does not amount to a major failure.

### Exclusions

Subject to non-excludable laws, this warranty does not cover:

- normal wear and tear to the product or parts
- consumables included with this product
- damage to the product caused by accidents, misuse, abuse, lack of reasonable care, tampering or repair by a person not authorised by Quell
- any product that has not been installed, operated or maintained in accordance with the manual or operating instructions provided with the product
- any indirect, special or consequential loss or damage of any kind

## MAKING A WARRANTY CLAIM

### To make a claim

If a defect in the product appears within the time frame stated, you are entitled to submit a warranty claim by returning your product to place of purchase.

Please provide proof of purchase and brief explanation of the problem. Where necessary, any postage and packaging expenses incurred to return the product will be at your cost.

If a defect is found, the place of purchase can elect to replace the product, repair the product or refund you for the product.

If it is elected to repair the product, goods presented for repair may be replaced by refurbished goods of the same type rather than being repaired. Refurbished parts may be used to repair the goods.

## Contact

For further information on the full range of Quell® products, visit our website [www.quell.com.au](http://www.quell.com.au)

Kidde Australia Pty Ltd  
ABN 68 006 252 428  
Building F, Unit 1B, 3-29 Birnie Avenue  
Lidcombe NSW 2141

Quell® is a registered trademark of Kidde Australia Pty Ltd.  
©2025 Kidde. All rights reserved.

Made in PRC